



data management software

Applications

- Occupational Exposure Assessment
- Compliance with Health & Safety Legislation
- Record Keeping of Occupation Exposures
- Reducing Occupational Exposure
- Exposure Source Identification

Data Management Software

Casella **insight** data management software provides Health and Safety professionals with a more advanced solution for downloading, managing and reporting exposure data for a variety of occupational hazards.

Rather than using several software applications to download from many instruments, Casella **insight** allows data to be downloaded and stored into one versatile package. This means that only one application has to be learnt! Data is stored on a centralised database which may be managed by Person, Place or Process criteria.

Data can be viewed in tabular or graphical format and analysed as necessary. Uniquely, reports can be generated combining multiple hazards simultaneously. They may be displayed by Person, Place etc as required.

Key Features

- Supports Multiple Instruments
- Report Multiple Exposure Parameters
- Safe and Secure Data Management
- Manage Instrument Inventory and Calibration
- Intuitive User Interface
- Quickly Generate Comprehensive Reports
- Tabular and Graphical Analysis of Data
- Import Data from Existing Casella Packages
- Audio File Playback (CEL-630 Sound Level Meters)
- Add New Instruments in the Future
- Share Information Easily with Others
- Integrated Help System

Casella insight Data Management Software



Switch between managing data or instruments with simple tabs

Simple tree structure to manage data e.g. person, place, etc.

Time history may be viewed, analysed and annotated as required

Sort data by person, process, etc.

Multiple parameters can be displayed and sorted simultaneously

Data can be dragged and dropped to the tree structure as required

Data may be graphed and copied to other applications

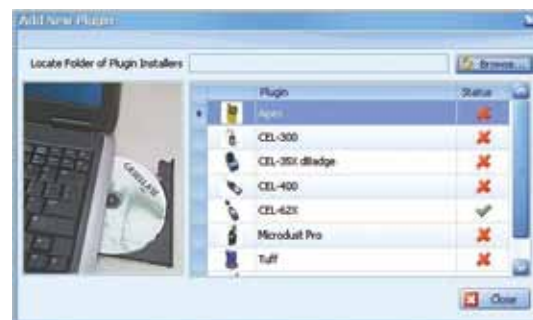
Simple Instrument Configuration and Download

- 'Plug & Play' Download of Instruments
- Calibration Management and Certificate Storage
- Add New Instruments as Required
- Import Data from Existing Casella Software Packages
- Share Data Easily with Other PC's or Colleagues

When an instrument is connected to Casella **insight**, it will automatically download stored data. Instruments can also be configured and controlled.

With occupational monitoring equipment, legislation requires periodic calibration to be performed. Casella **insight** will manage all your calibration dates and notify you when they are due, as well as storing calibration certificates.

Users of existing Casella software packages can import previously downloaded data. Likewise, data within Casella **insight** can easily be exported and sent to other colleagues or users, allowing data to easily be shared across organisations.



Adding additional instruments



Instrument calibration and configuration screen



Easy Data and Exposure Analysis

- Colour Code Results to Exposure Levels
- Analyse Time History Profiles
- Exposure Recalculations
- Analyse Exposure by Person, Place or Process

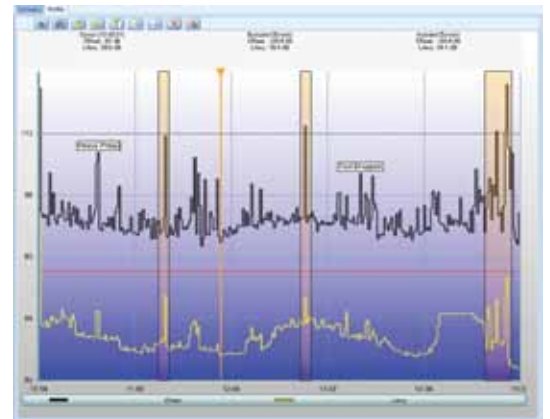
Exposure levels can be colour coded by a simple 'traffic light' system, it is easy to see which individuals or locations are exceeding action levels. Predefined action levels are provided for local legislation or can be defined as necessary.

For instruments that have stored the time history of levels (e.g. Noise Dosimeters), the stored profile can be analysed and graphs zoomed in to look at specific times. Graphs can be coloured as required, and notes inserted to illustrate important events.

Graphs can be further analysed by adding zones (shown right) which subsequently provides exposure levels inside and outside these zones. This allows the exclusion of extraneous events, breaks etc to provide comparative exposure calculations. Any exclusion zones added to data are retained with the data file.



Exposure data can be automatically colour coded according to exceeded action levels



'Exclusion' zones for each time history are stored and individual to each data file

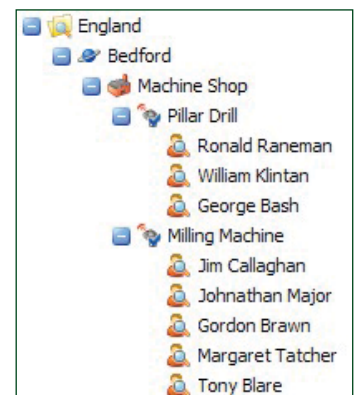
Manage Exposure Data and Easily Generate Reports

- Report Data from Multiple Exposure Hazards
- Built in Report Wizard Function
- Store Exposure Data by Name, Person, Place etc
- Store Data in a Simple Tree Structure
- 'Drag and Drop' to Organise Your Data

A simple 'tree view' can be created with which to store and manage data by person, place or process. Once data is downloaded, files can be dragged and dropped to the relevant tree location and all data is stored within a central database. Templates are provided to view data for local legislation (e.g. OSHA) or can be customised, displayed and reported simply or comprehensively as required.

Exposure data from multiple hazards such as noise and dust can be viewed and reported simultaneously. Reports can be stored in multiple formats (e.g. .pdf, .jpg, or .csv) allowing them to be shared and viewed easily, as well as exported to other applications. To create a report, simply 'right click' on the appropriate part of the tree view and the report wizard allows creation of a report for people, processes etc from that part of the tree.

The integral report wizard allows reported parameters to be selected as required and report settings are retained for the next time it is used. Notes can be added to data, which appear on reports as required. This information could include details about the measurement and subsequent recommendations or actions required to reduce exposure.



Data can be stored and organised using a Tree View



Reports can be generated to include dust and noise results together, for example

Ordering Information

Part Number:	Description:
ISC020	Casella insight CD with instrument plug-ins ¹
ISR020	Casella insight registration codes for all plug-ins ²

Other combinations of plug-in are available, please contact Casella CEL for more information

¹ Plug-ins included are: CEL-35X, CEL-62X, CEL-63X, Microdust, TUFF and Apex.

² Requires a copy of insight already installed, either by download or from CD.

Licensing Information

The Casella **insight** Demonstration Software (ISC000) is available free of charge and provides 30 days usage including demonstration data for all available plug-ins.

Registration is required for ongoing usage of the software by purchasing the relevant license(s), which are available for single or multiple PC users.

Minimum PC Specification

Operating System:

Windows XP (Service Pack 2)

Windows Vista (Service Pack 1)

Windows 7

Processor: 1.3GHz

RAM: 1GB

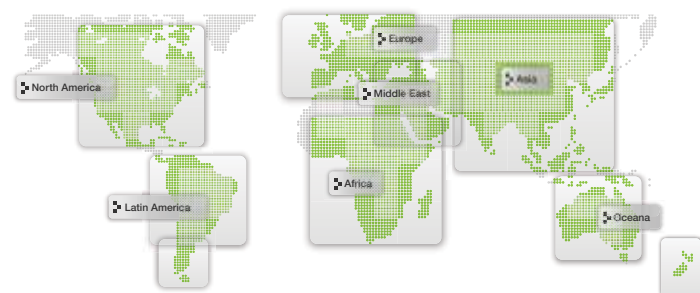
Free Disk Space: 1GB

Window media player must be installed.

Casella **insight** may run on lower specification computers but the details quoted provide good software performance. We recommend that you verify performance and specification with your I.T. department prior to purchase and installation.

Global Company

Casella is a global company with a network of offices and distributors, giving excellent customer support wherever you are. Contact us to find your local office or distributor.



Casella CEL (Head Office)

Regent House, Wolseley Road, Kempston,
Bedford MK42 7JY.
United Kingdom
Tel: +44 (0) 1234 844100
Fax: +44 (0) 1234 841490
Email: info@casellacel.com
Web: www.casellameasurement.com

Ideal Industries India Pvt.Ltd.

229-230, Spazedge,
Tower -B Sohna Road,
Sector-47, Gurgaon-122001,
Haryana (India)
Tel: +91 124 4495100
E-mail: Sanjeev.Munjal@ideal-industries.in

Casella CEL (USA Office)

415 Lawrence Bell Drive Unit 4,
Williamsville
NY 14221
USA
Toll Free: +1 (800) 366 2966
Fax: +1 (603) 672 8053
E-mail: info@casellausa.com
Web: www.casellausa.com

Casella China (中国) 地址

Room 1702, Citychamp Building, No 12 Tai Yang Gong
Zhong Lu Chao District, Beijing, 10002B, China
邮编: 100738
电话: 0086 10 85183141
传真: 0086 10 84298061
电子邮件: info@casellameasurement.cn
网址: www.casellachina.cn

Distributed by



SM09005 v1.3